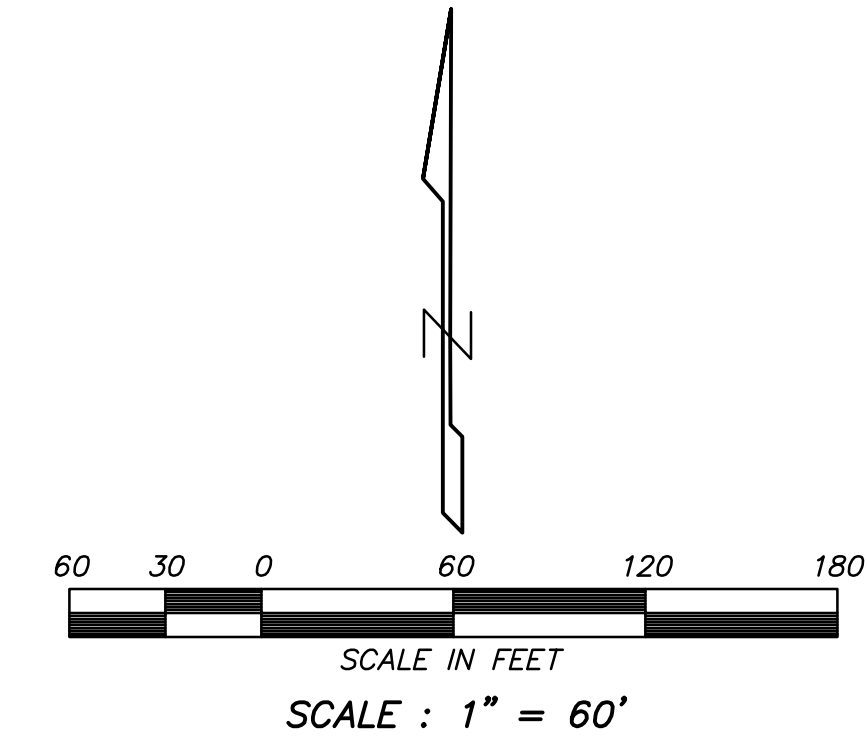


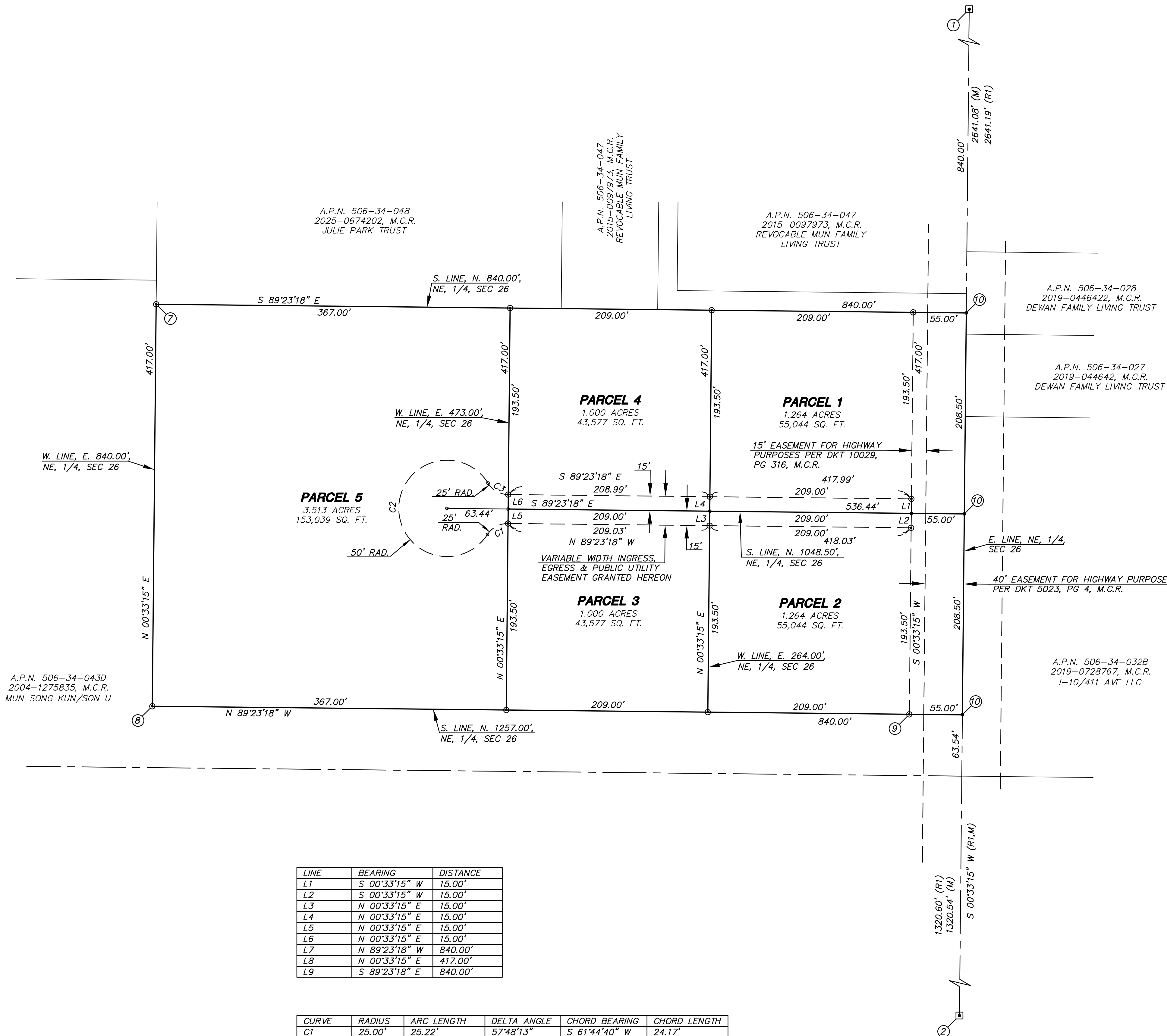
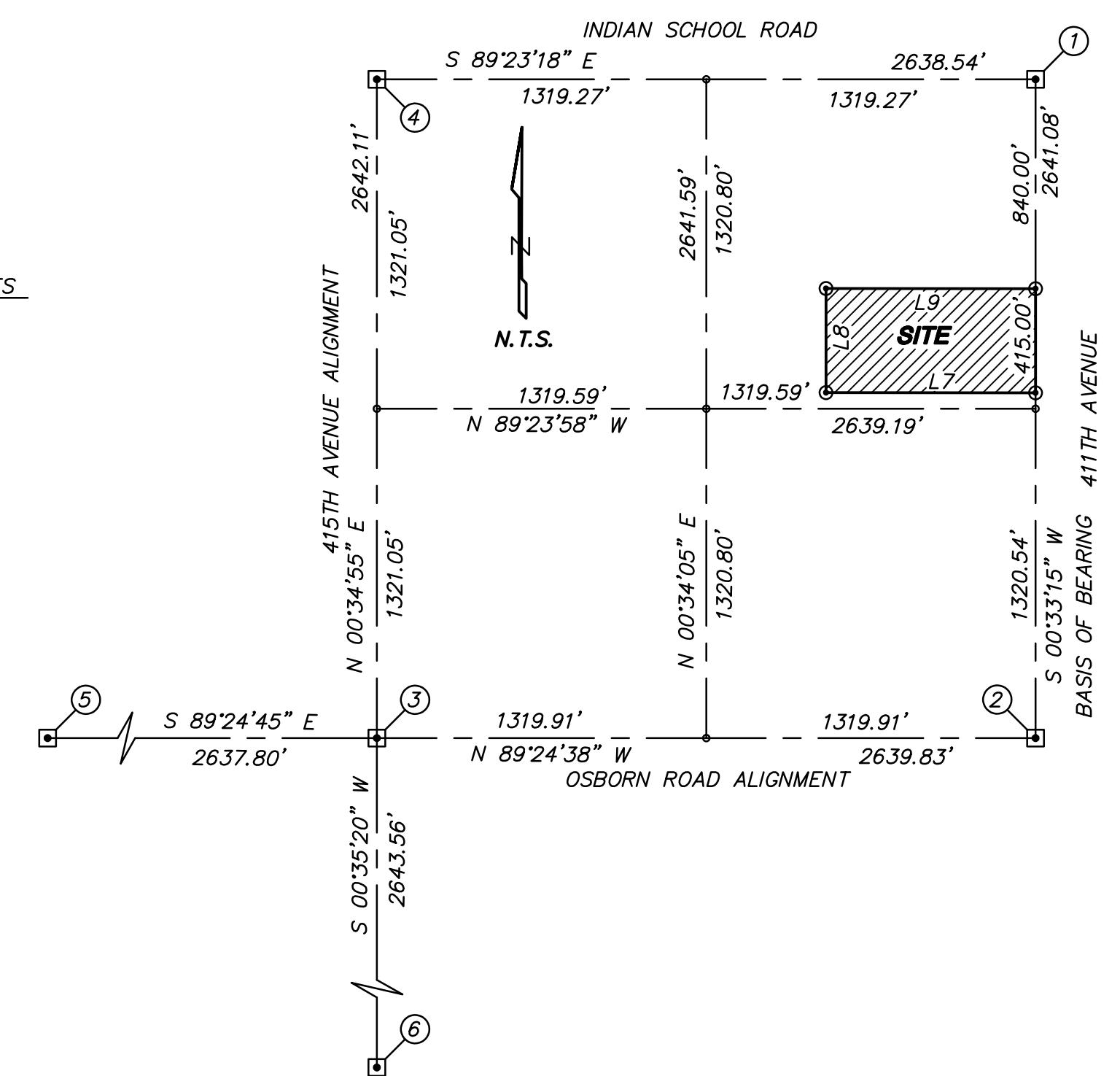
LEGEND

- ⊕ Set 1/2" Rebar W/ Cap L.S. 31020 (unless otherwise noted)
- Property Line
- ▣ Fnd Survey Monument (See Monument Table)
- Ⓢ (See Monument Table)
- (R) Record
- (M) Measured



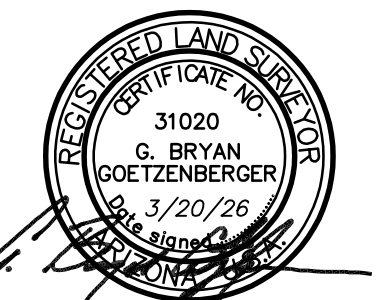
MONUMENT TABLE	
①	NE. COR. SEC. 26 - FND BRASS CAP IN HANDHOLE
②	E. 1/4 COR. SEC. 26 - FND BRASS CAP IN HANDHOLE
③	CEN. OF SEC. 26 - FND ALUMINUM CAP FLUSH L.S. 77462 PER (R1)
④	N. 1/4 COR. SEC. 26 - FND MARICOPA COUNTY ALUMINUM CAP
⑤	W. 1/4 COR. SEC. 26 - FND G.L.O. BRASS CAP
⑥	S. 1/4 COR. SEC. 26 - FND G.L.O. IRON PIPE
⑦	SET 1/2" REBAR W/CAP L.S. 31020 - ALSO FND 1/2" REBAR W/NO I.D. S. 06°12'41"E 1.18' - NOT ACCEPTED - SEE SURVEY NOTE 4
⑧	SET 1/2" REBAR W/CAP L.S. 31020 - ALSO FND 1/2" REBAR W/NO I.D. S. 09°15'26"E 1.29' - NOT ACCEPTED - SEE SURVEY NOTE 4
⑨	FND 1/2" REBAR W/NO I.D. - SET CAP L.S. 31020
⑩	PROPERTY CORNER NOT SET IN ROAD

NE. 1/4, SECTION 26, T2N, R7W



LINE	BEARING	DISTANCE
L1	S 00°33'15" W	15.00'
L2	S 00°33'15" W	15.00'
L3	N 00°33'15" E	15.00'
L4	N 00°33'15" E	15.00'
L5	N 00°33'15" E	15.00'
L6	N 00°33'15" E	15.00'
L7	N 89°23'18" W	840.00'
L8	N 00°33'15" E	417.00'
L9	S 89°23'18" E	840.00'

CURVE	RADIUS	ARC LENGTH	DELTA ANGLE	CHORD BEARING	CHORD LENGTH
C1	25.00'	25.22'	57°48'13"	S 61°44'40" W	24.17'
C2	50.00'	297.96'	295°35'48"	S 00°34'57" W	53.29'
C3	25.00'	25.19'	57°44'05"	N 60°29'12" W	24.14'



LAND DIVISION SURVEY

ALLIANCE
LAND SURVEYING, LLC
 7800 N. 70th AVENUE, SUITE 104 Phone: (623) 972-2200
 GLENDALE, AZ 85303 contactus@alliance.com
 www.alliancelandsurveying.com